

■ Installation Guide

LCON Parameterizable Converter

Software Installation

Version 02

Lütze Transportation GmbH
Bruckwiesenstraße 17-19
D-71384 Weinstadt
Tel.: +49 (0) 7151 6053-545
Fax: +49 (0) 7151 6053-6545
Sales.Transportation@luetze.de
www.luetze-transportation.de



Content

1	Introduction	4
2	General Information	5
2.1	Symbol Description	5
2.2	Copyright	5
2.3	Disclaim of Liability	5
2.4	Related Documents	6
3	Safety	7
3.1	Intended Use	7
3.2	Recepients.....	7
3.3	Operating Employees	7
4	Installation	8
4.1	System Requirements	8
4.2	Download.....	8
4.3	Installation PACTware and HART-DTM Driver	8
4.4	Installation Lütze DTM Driverr	12
4.5	Installation USB Driver.....	15
4.5.1	Installation Check	16
5	Connecting the converter	17
6	Parameterization with PACTware	18
6.1	Create a Lütze Device/ Create a New Project	18
6.1.1	Device Catalog	18
6.1.2	Wizard.....	20
6.1.3	DTM-Short Cut.....	20
6.1.4	HART Communication Parameterization	21
6.2	Online/Offline Parameterization	22
6.3	User Administration	24
6.4	Display Measured Value.....	25
7	Error Treatment	26
8	Service	27
9	Revision of the Document	28

1

Introduction

The installation guide is part of the LCON parameter and driver Software. The installation guide contains important information about the handling and safety. To avoid hazardous situations and property damages read the installation guide before working with the software. Store the installation guide at a handy place. If selling, renting or in case of a devisture pass the installation guide to the authorize person.

2 General Information

2.1 Symbol Description

The manual contains several safety messages. Each safety message contains a defined signal word and a color. The color and the word are referring to an alert level. There are 4 levels. The safety messages point out hazardous situations and give information to avoid those.



Indicates a hazardous situation which, if not avoided will result in death or serious injury.



Indicates a hazardous situation which, if not avoided could result in death or serious injury.



Indicates a hazardous situation which, if not avoided could result in minor or moderate injury.



Is used to address practices not related to personal injury.

2.2 Copyright

The installation guide is intended for the operator and his staff. It is forbidden to give the content to a third party, to duplicate, exploit or impart it. The Lütze Transportation GmbH has to allow it explicit in writing.

General data, text, images and drawings are copyrighted and are liable to the industrial property right. Contravention can be prosecuting criminally. The named brands and product names in this document are trademarks or registered trademarks by titleholder.

2.3 Disclaim of Liability

The installation guide was written under consideration of the applied standards, regulations and the current state of technology.

The content is verified of accuracy. Discrepancies are not excluded. For those discrepancies we disclaim liability. Applicable changes and additional information will be in the next version of the manual.

The Lütze Transportation GmbH does not assume liability for any damages and accidents of following reasons:

- Nonobservance of the manual
- Untrained and unqualified employees
- Non conventional use
- Non approved reconstructions and functional modifications of the product
- Using non original or non admitted parts or equipment

2.4

Related Documents

The software is for parameterizing different converter..

NOTICE

Before installation read the documentation of the particular converter and the online help of the PACTware.

3 Safety

3.1 Intended Use

The parameter software and the driver software is only for parameterizing the following converter of the Lütze Transportation GmbH and the Friedrich Lütze GmbH:

- Analog/Analog Converter
- Temperature/Analog Converter
- Analog Limit Switch
- USB Service Cable

3.2 Receptients

The installation guide addresses planers, project manager and programmers. It also addresses the operating employees which are responsible for the initial operation, the operating and for the maintenance of the products and systems. Regarding the employees different qualification levels are differentiated.

3.3 Operating Employees



Risk of injury by deploying insufficient qualified operating employees.

Inappropriate appoint of not qualified or insufficient personal can cause property damages and personal injuries. Tasks which apply special procedures should be done by trained and qualified employees or experts, especially electricians.

Trained Employees

The employee was trained by the employer on the task and possible hazardous situations. The employee does not have any technical knowledge.

Experts

The employee has a technical education, knowledge and/or experience in the required field. The employee is capable to do specific operations on and with the product.

Electrically qualified persons

The employee has a technical education in the required field. The employee is capable to do special operations on and with the product.

The different sections of the manual referring to the qualification level of the operating employees.

4 Installation

Additional to the PACTware Software the HART-DTM driver will be installed. For the configuration of the converter the Lütze driver and the USB driver are necessary. Read the installation remarks on *Seite 12 and Seite 15*.

4.1 System Requirements

Before installing the software, check if the system meets the necessary requirements:

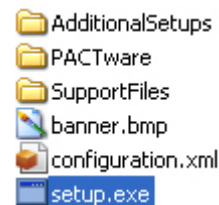
- Windows XP, 32-Bit
- Windows 7, 32 Bit / 64-Bit
- Windows 8, 64-Bit
- Windows 10, 64-Bit

4.2 Download

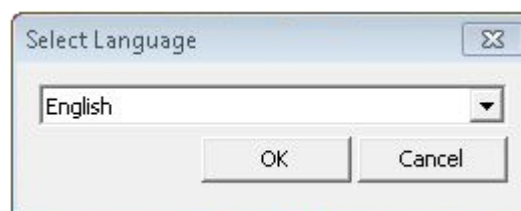
Before a download is possible, register on the Lütze website. Click **Login**. The software and the driver can be downloaded as a zip-file on the Lütze Transportation website: ***www.luetze-transportation.de***.

4.3 Installation PACTware and HART-DTM Driver

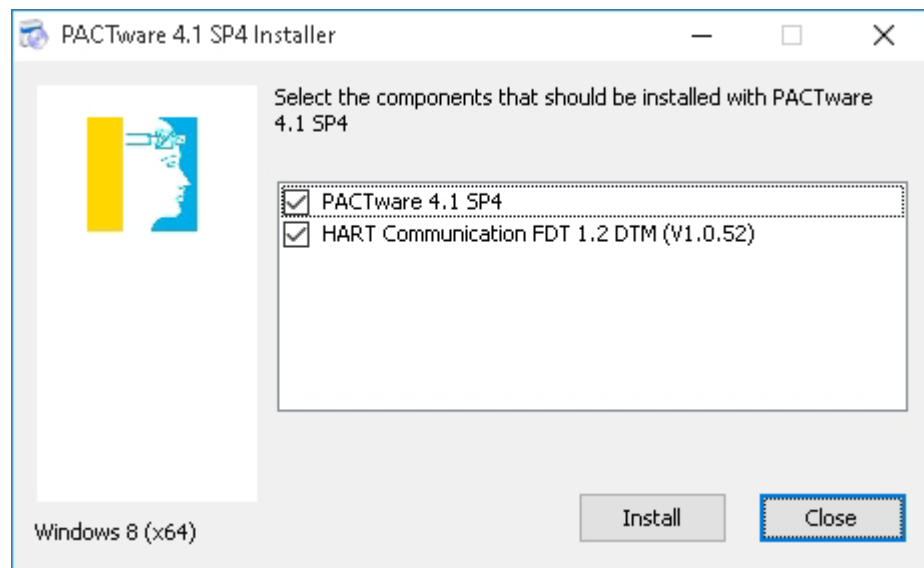
1. Unzip the downloaded file.
2. Start the installation by double clicking on the **setup.exe** file.



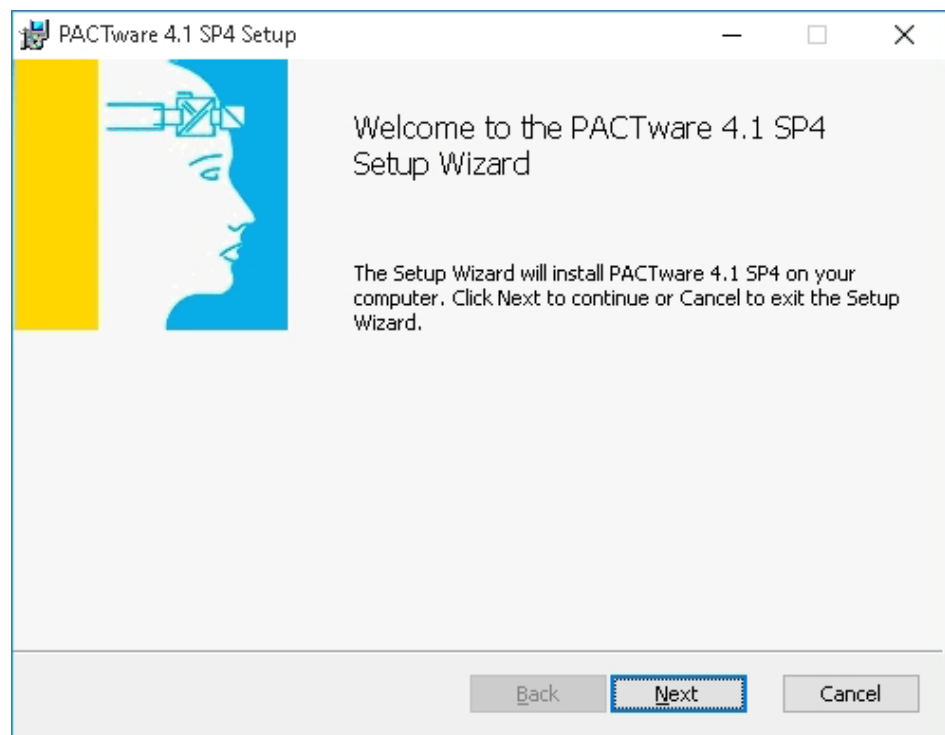
Following window appears:



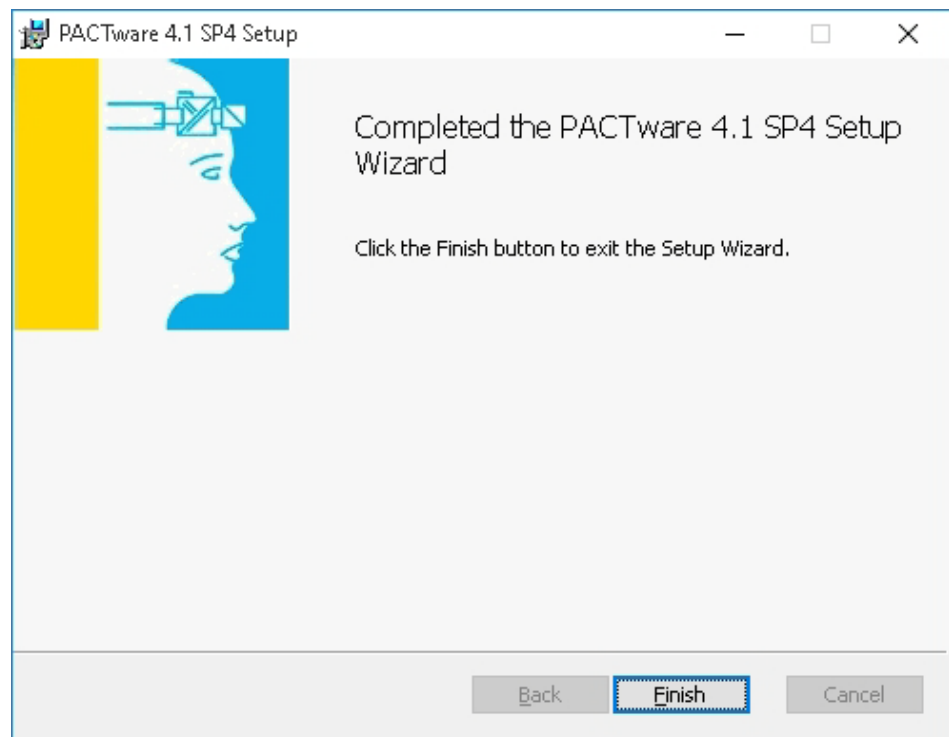
3. Choose a language and confirm by clicking **OK**.



4. Choose **PACTware** and **HART Communication**.
5. Click **Install**.



6. Follow the directions of the setup assistant. Click **Next** to proceed. Click **Back** to go one step back. Click **Cancel** to cancel the installation.



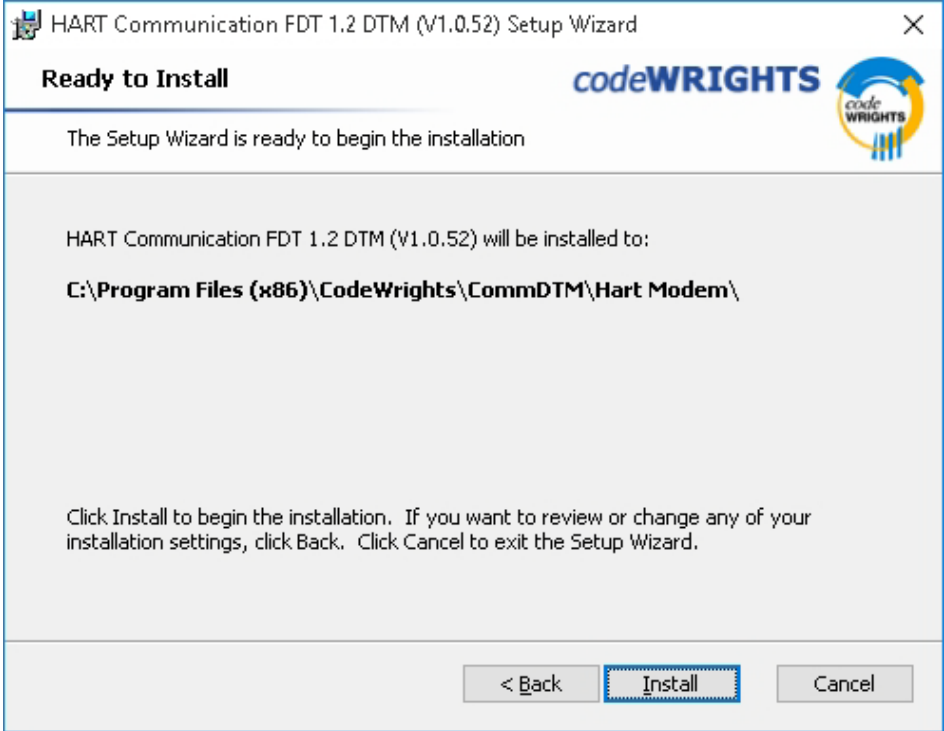
7. Click **Finish** to complete the installation.

Right after the PACTware Installation the start window of the HART DTM Driver Installation appears.

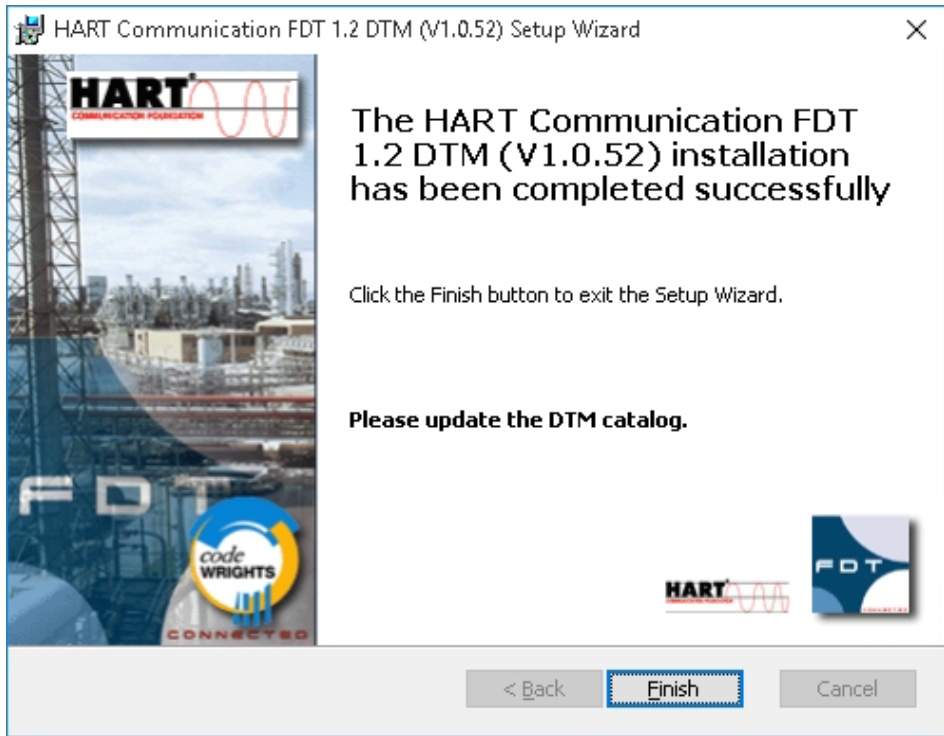
8. Follow the directions of the setup assistant. Click **Next** to proceed. Click **Back** to go one step back. Click **Cancel** to cancel the installation.



9. Click **Install** to start the installation of the HART-DTM driver.



10. Click **Cancel** to complete the installation.

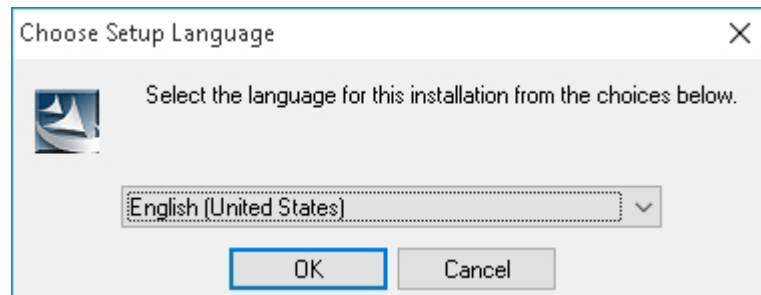


4.4

Installation Lütze DTM Driverr

1. Unzip the downloaded zip-file.
2. Start the installation by double clicking the **setup.exe** file.

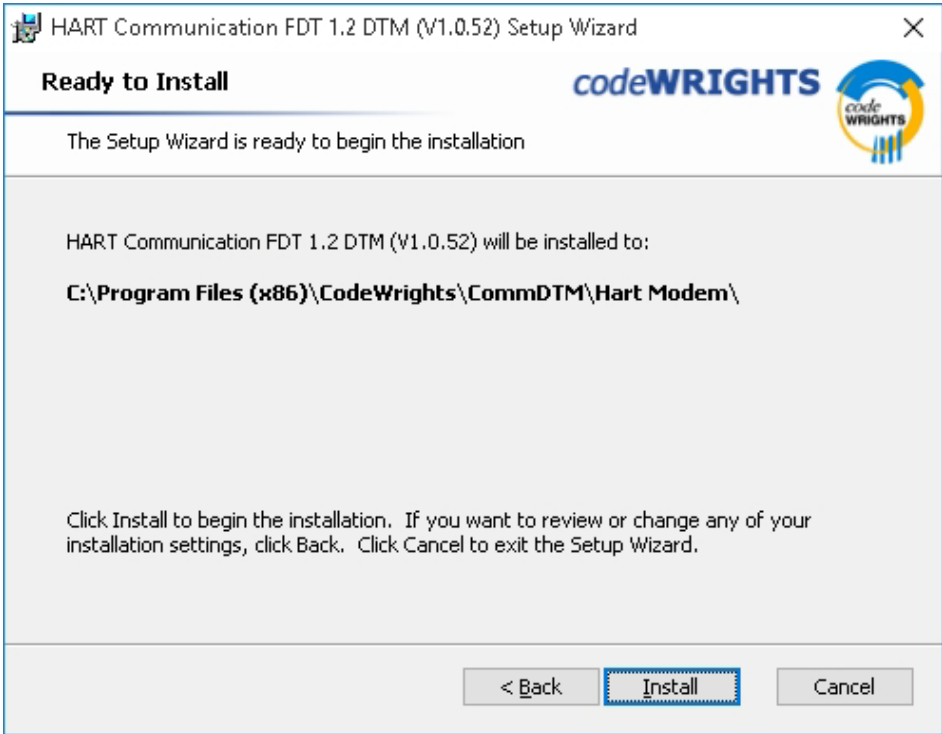
Following window appears:



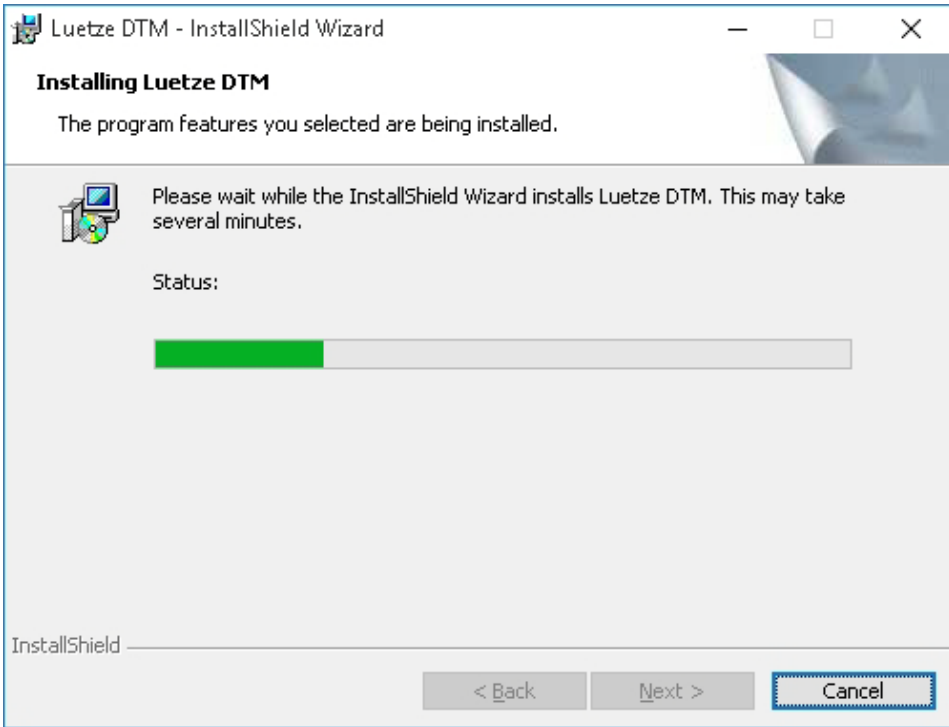
3. Choose a language.



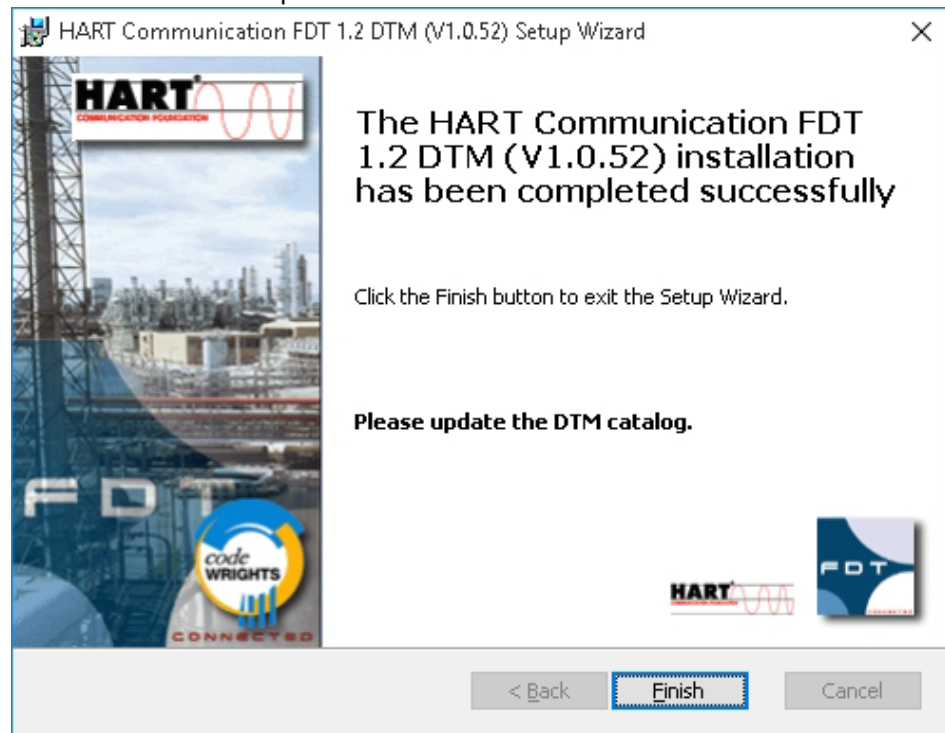
4. Follow the directions of the setup assistant. Click **Next** to proceed. Click **Back** to go one step back. Click **Cancel** to cancel the installation.



5. Click **Install** to start the installation.



6. Click **Finish** to complete the installation.

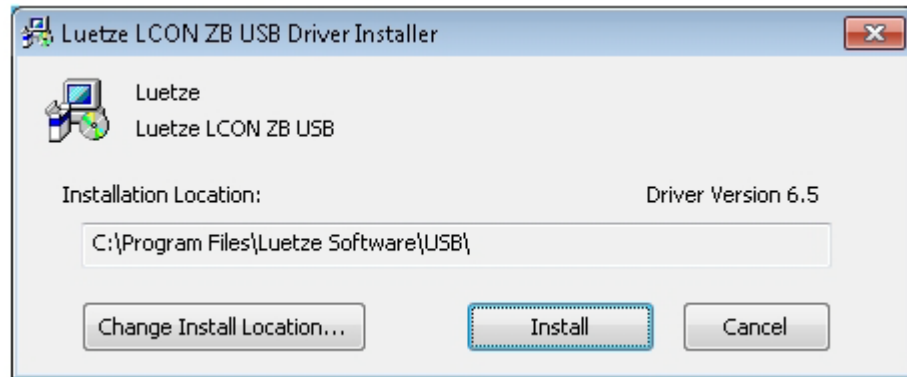


4.5

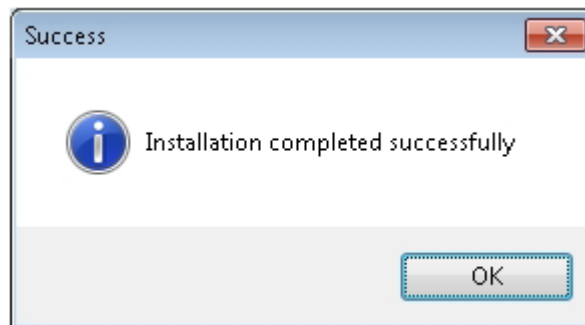
Installation USB Driver

1. Unzip the downloaded zip-file.
2. Start the installation by double clicking **install.exe**.

Following window appears:

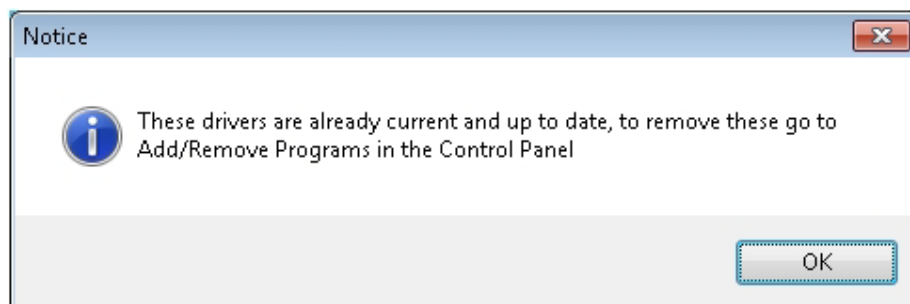


3. Click **Install** to start the driver installation.



4. Click **OK** to complete the installation.

If the driver is already installed, following window appears:



5. Click **OK**.

4.5.1

Installation Check

1. Connect the converter via the USB cable with the computer.
2. Open the window device manager:
Start>Control Panel>Device Manager
3. After a successful installation the **LCON ZB USB** appears under connectors.

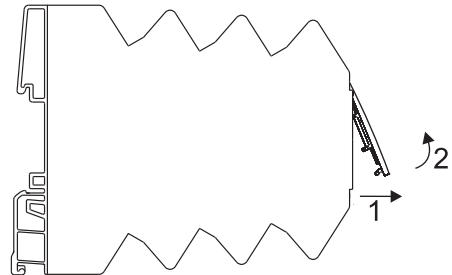


5

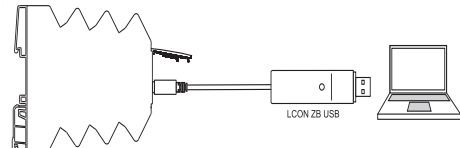
Connecting the converter

To configure the converter with the PACTware, connect the converter to the computer via the LCON USB Service cable (Part-No. 815900). Proceed as follows:

1. Open the front plate.
2. Push the front plate up.



3. Now connect the converter to the computer via the LCON ZB USB.



Connecting the **LCON ZB USB** the first time, the window **New Hardware found window appears**.

4. Choose, **No not this time** and click **Next**.
5. Choose **Software installation automatically (recommended)** and click **Next**.
6. Click **Finish** to complete the installation.
7. If the driver is installed correctly, the LED on the USB connector flashes green.




6 Parameterization with PACTware

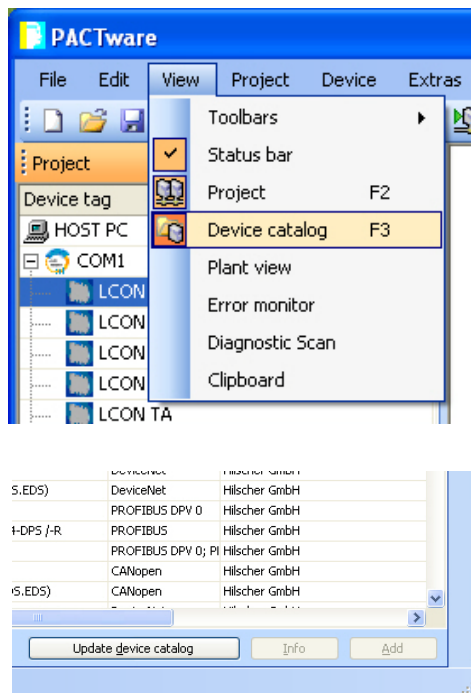
NOTICE

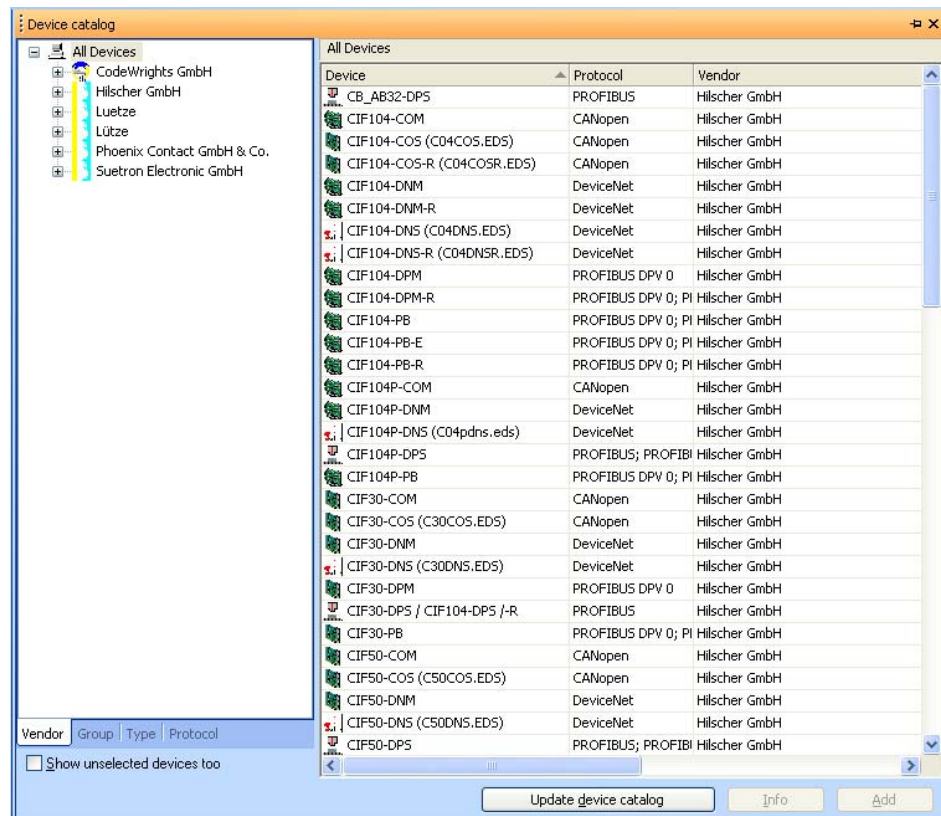
Possible error of the converter! During the parameterization set the dip switch of the LCON Converter 817006 and 817002 to **OFF**.

6.1 Create a Lütze Device/ Create a New Project

6.1.1 Device Catalog

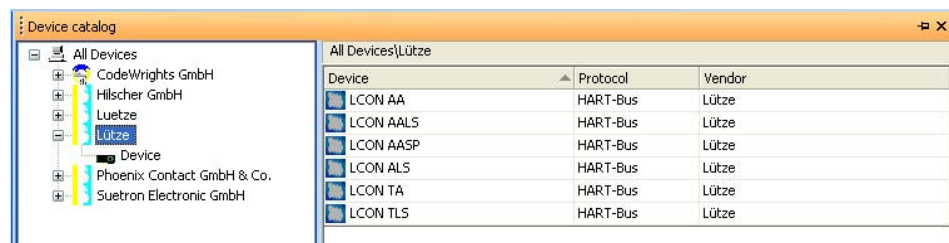
1. Choose **File>New** or click  in the symbol bar.
2. Click **View>Device Catalog** or press **F3**. The device catalog shows the installed DTMs.
3. Click **Update device catalog** to add the last installed DTMS.





- Choose the device from the **HART Communications** list. The device connects the PC and device DTM.
- Click **Add**. The device appears in the project window.
- Choose from the device catalog the device for the parameterization.
- Click **Add**.

Device	Protocol	Vendor
COM-DNS (COMDNS.EDS)	DeviceNet	Hilscher GmbH
COM-DPM	PROFIBUS DPV 0	Hilscher GmbH
COM-DPS	PROFIBUS	Hilscher GmbH
COM-PB	PROFIBUS DPV 0; PI	Hilscher GmbH
DIGORAL (Doral10mod.eds)	CANopen	Lütze
EC3-DEB-DNS (Ec3dsw.eds)	DeviceNet	Hilscher GmbH
EC3-DEB-DPS	PROFIBUS; PROFIB	Hilscher GmbH
HART Communication	HART	CodeWrights GmbH
IL PB BK	PROFIBUS	Phoenix Contact GmbH & Co.
IL PB BK DP/V1 (DPS=OFF)	PROFIBUS	Phoenix Contact GmbH & Co.
IL PB BK DP/V1 (DPS=ON)	PROFIBUS; PROFIB	Phoenix Contact GmbH & Co.
IL PB 24	PROFIBUS	Phoenix Contact GmbH & Co.
LCON AA	HART-Bus	Lütze
LCON AALS	HART-Bus	Lütze
LCON AASP	HART-Bus	Lütze
LCON ALS	HART-Bus	Lütze
LCON TA	HART-Bus	Lütze
LCON TLS	HART-Bus	Lütze



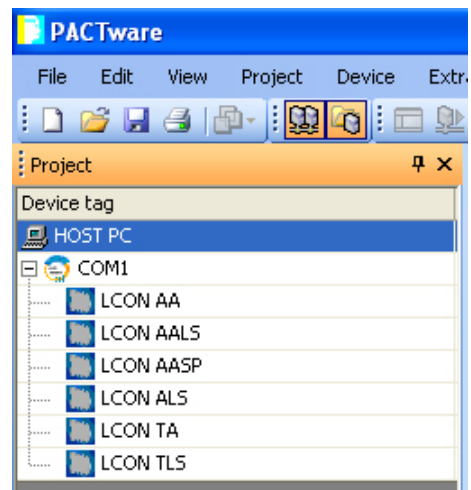
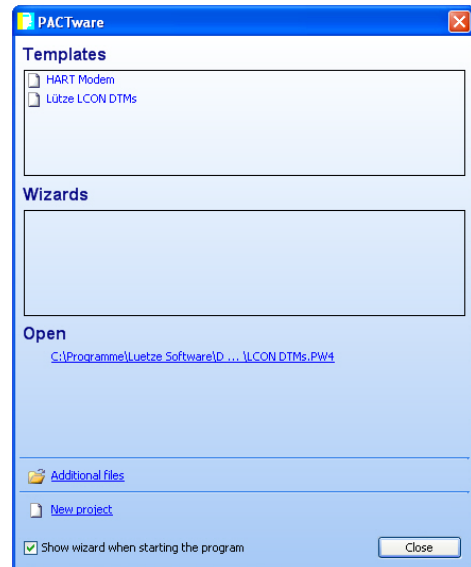
6.1.2

Wizard

1. Start PACTware.

The Wizard window appears after the start.

2. Choose the **Luetze LCON** under Templates by double clicking.
3. The **Luetze LCON** devices appear in the project window.



6.1.3

DTM-Short Cut

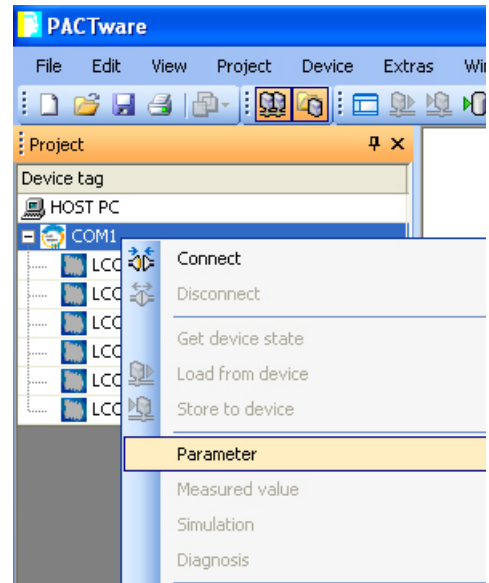
1. Choose under windows:
Start>Program>
Lütze Software> DTMs>
Start Project (PACTware)>
Lütze DTMs.

PACTware opens automatically and the Lütze devices appear in the project window.

6.1.4

HART Communication Parameterization

1. In the project window click with the right mouse button on **HART Communication**.
2. Choose **Parameter**.
The reset settings appear.



3. Change the parameter as follow:

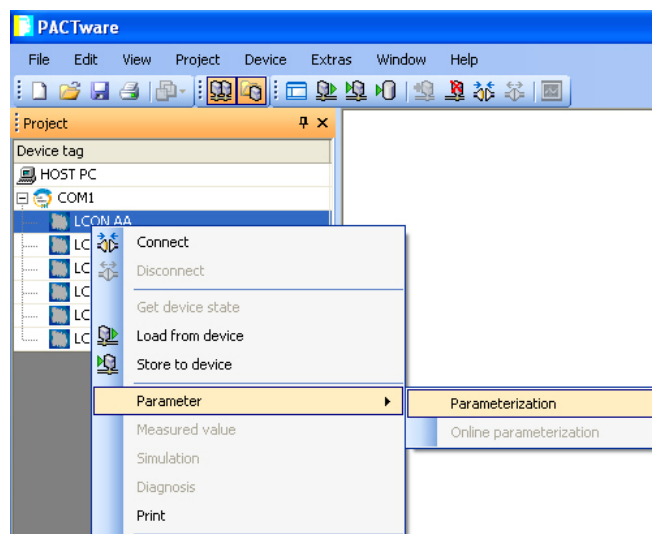
Communication interface	HART multiplexer
Serial Interface	COM8 (LCON ZB USB)
	Baudrate: 9600
	RTS Control: Toggle
HART protocol	Master: Primary Master
	Preamble: 5
	Number of communication retries: 3
Address scan	Start address: 0
	End address: 15

6.2

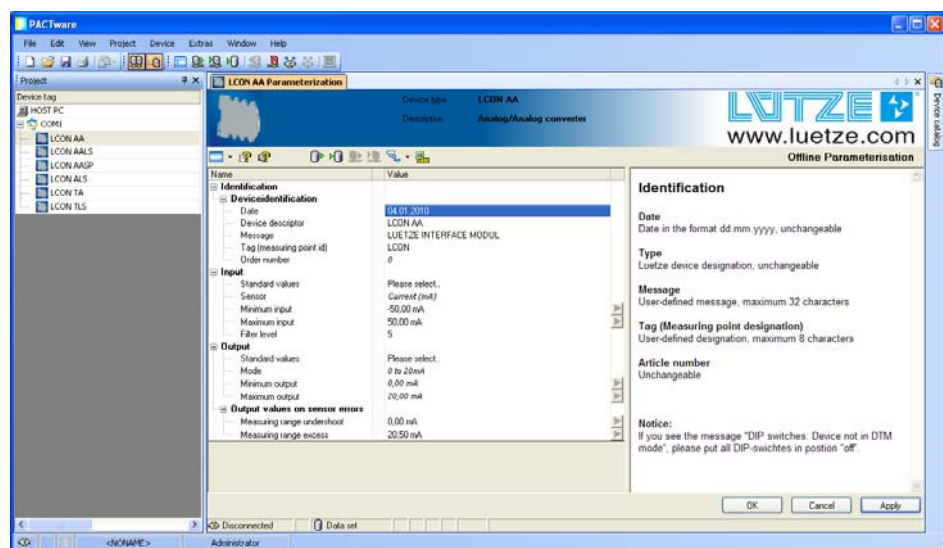
Online/Offline Parameterization

It is possible to parameterize the devices in the online and offline mode. During the online mode the device is connected. During the offline mode the data will be written and saved in the database. Is a module connected and the HOST PC and converter are connected, data from the database can be transferred.

1. In the project window click with the right mouse button on the particular device.
2. Choose **Parameter** for the offline parameterization or **Parameter>Online>Parameterization** for the online parameterization.












Following parameter window appears:



3. Choose the parameter names by double clicking.
4. Adjust the values. In the window on the right side

Following Settings can be made in the symbol bar:

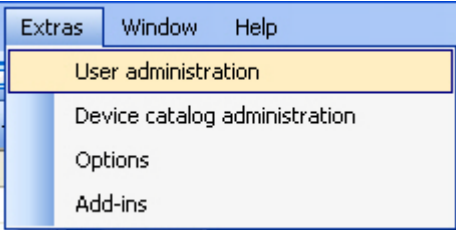
-  Hide range of indication
-  DTM help
-  Link datasheet
-  Load parameter from the database
-  Transfer parameter in the database
-  Read parameter from the device
-  Transfer parameter to the device
-  Collapse or expand tree view
-  CSV export of the actual data

6.3 User Administration

PACTware offers the possibility for user administration. 5 different password protected access rights can be defined:

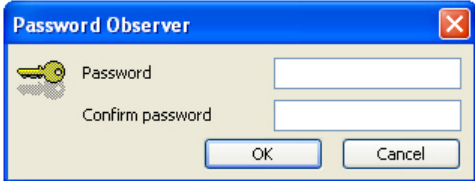
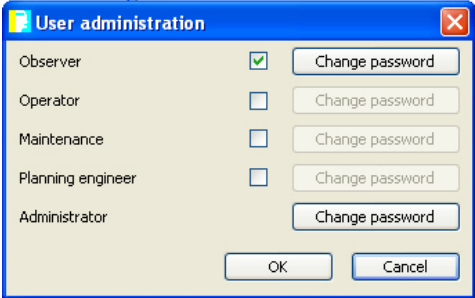
- Observer
- Operator
- Maintenance
- Planning engineer
- Administrator

1. Click **Extras** in the menu bar.
2. Choose **User Administration**.



Following window appears:

3. Click **Change Password** to change the password.



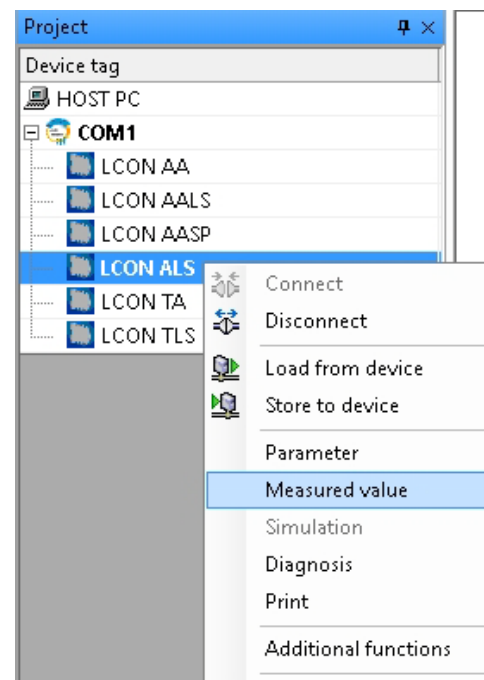
6.4

Display Measured Value

If the device is connected the recent measured values can be displayed.
Measured values are:

- Input signals
- Output signals
- Temperature values and
- Switching state relay 1/2.

1. Click on the particular device with the right mouse button .
2. Choose **Measured value**.



7

Error Treatment

Error	Possible Reason	Procedure
Service cable LCON ZB USB is unknown.	Only PACTWare	Install the LCON HART DTM driver.
	The installation was started out of the zip-file.	Unzip the zip-file and reinstall the PACTware.
DTM-Driver are unknown in PACTWare	The operating system Windows 7 (64 Bit) is in use.	Additionally install the Silicon Labs Driver.
		Open the device catalog by pressing F3. Choose Update Device Catalog . It is only possible for a closed project.
	LCON HART DTM Driver is not installed	Unzip the zip-file and proceed with the installation
LCON ZB USB LED does not light up	The LCON ZB USB is connected to a USB 3.0 port.	Connect the LCON ZB USB to a USB 2.0 port.

8**Service**

If you have any further questions regarding the product or our repairing service please contact us:

Lütze Transportation GmbH
Bruckwiesenstraße 17-19
71384 Weinstadt
Tel.: +49 (0) 7151 6053-545
Fax: +49 (0) 7171 6053-6545
Sales.Transportation@luetze.de

9

Revision of the Document

Version	Revision	Date
01	Release of the Document according to the Automation template	12/10/2012
02	Adaptations of Screenshots and System requirements	05/09/2016

