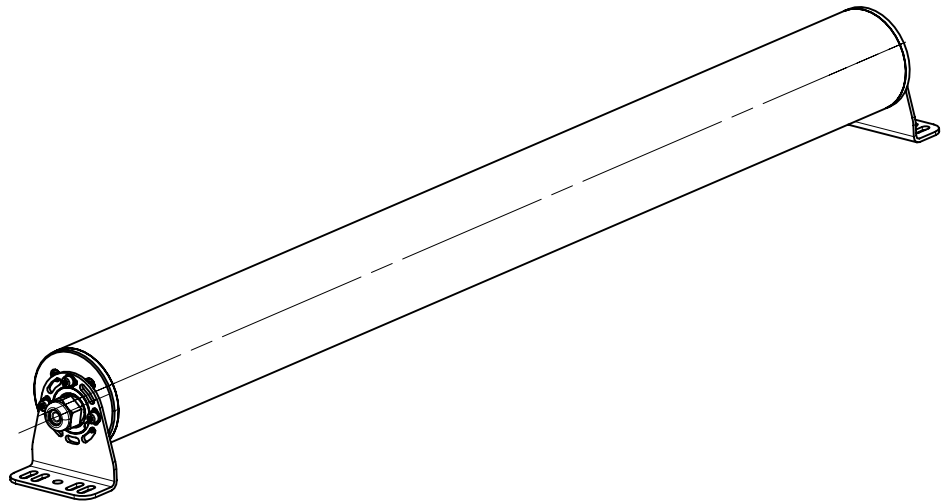
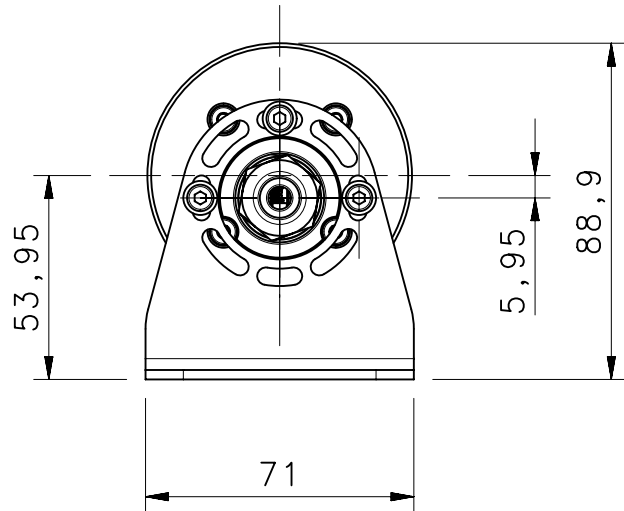
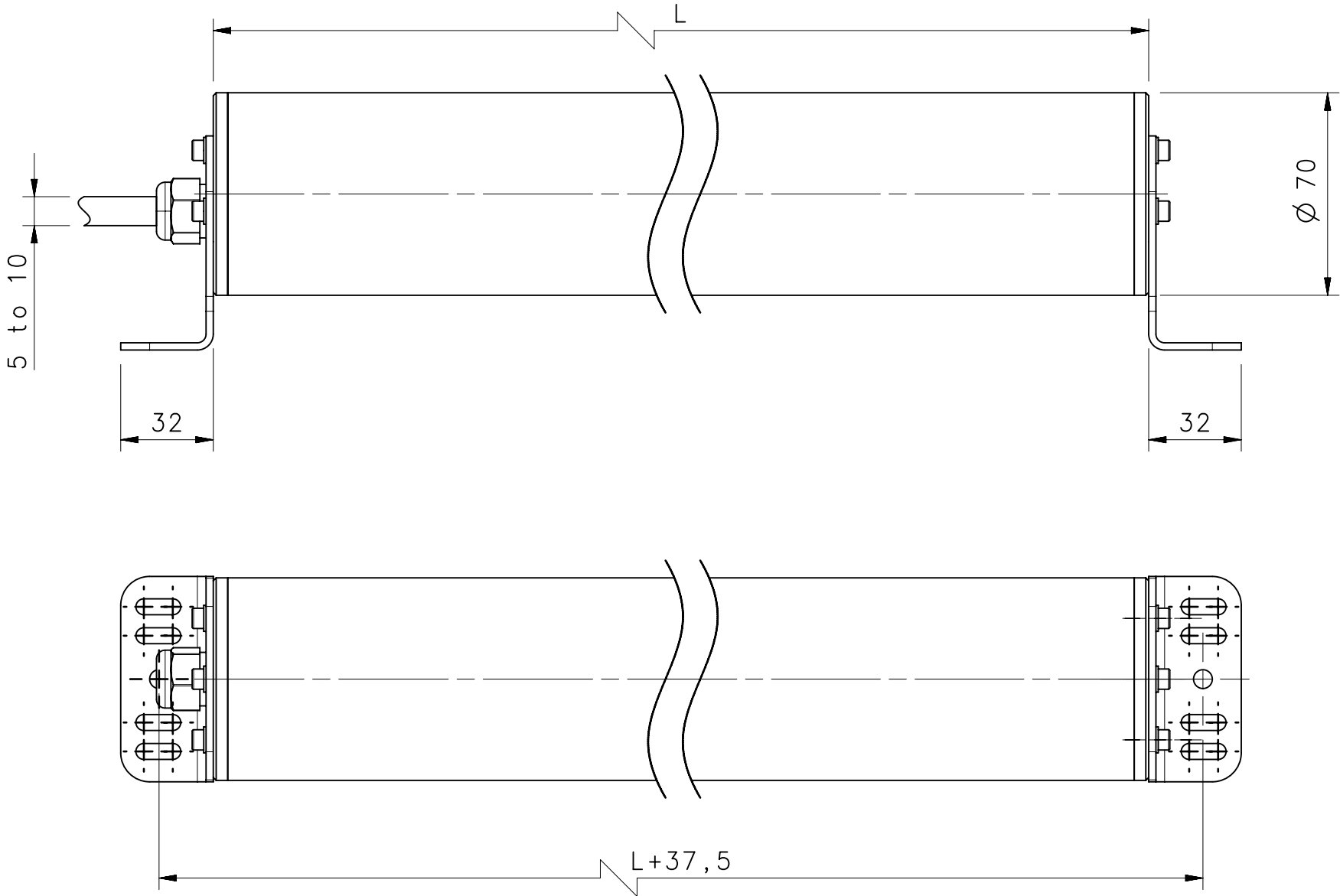



SG2/4b	
Version	L (mm)
150	378,5
300	528,5
450	678,5
600	828,5
750	978,5
900	1128,5
1050	1278,5
1200	1428,5
1350	1578,5
1500	1728,5
1650	1878,5
1800	2028,5

SE2/4	
Version	L (mm)
P/Q-2-050	804
P/Q-3-080	1104
P/Q-4-090	1204
P/Q-4-120	1504

SG Body Compact	
Version	L (mm)
SG S2 050	813
SG S2 080	1113
SG S4 090	1213,5
SG S4 120	1513,5



1:5

	D		Added top view and dimension			13/11/19	Guttadauro	
	C	EC032015	SG Body Compact lenghts corrected			17/06/19	Guttadauro	
MOD.	REV.	PROPOSAL	DESCRIPTION.			DATE	SIGN	
All materials employed have to be selected among RoHS compliant materials: the EC directives to be referred to are 2002/95/EC and correlated subsequent ones.								
DIMENSIONS WITHOUT TOLERANCE DEGREE:				NOTE				
PRECISION DEGREE	DIMENSIONAL GROUPS					TREAT.	SCALE  1 : 2	
	> 0 A 6	> 6 A 30	> 30 A 120	> 120 A 315	> 315 A 999	MATER.		
MEDIUM (m)	± 0.1	± 0.2	± 0.3	± 0.5	± 0.8			
PRECISE (P)	± 0.05	± 0.1	± 0.15	± 0.2	± 0.3	DES. BY L. ROSSETTI	DATE 13/06/2019	APPROV.
 www.datalogic.com				NAME  SG-IP69K OVERALL DIMENSIONS		MOLD N°		REV.  D
						CODE		
						PART N° DIM-0621		