

ALFRA BS 120 CU-BUSBAR BENDING AND HOLE PUNCHING DEVICE

Two functions, one device: With the BS 120 CU from Alfra, control cabinet builders can bend and punch copper busbars in just a few steps. In bending mode, the bending-die simply has to be inserted into the hydraulic piston. The required bending angle is to be set by using the adjusting screw.

In punching mode, the BS 120 CU punches holes with a diameter between 6.6 mm and 21.5 mm or oblong holes up to max. 21.0 x 18.0 mm, depending on the used punch. The universal working cylinder processes busbars up to 120 mm x 12 mm.

In addition, the BS 120 CU scores with various safety features.

Included accessories:

- Electric angle reader
- Bending die
- Length stop



Prod.-No. 03200SET.NG

	Prod.-No.
BS 120 CU-busbar bending and hole punching device	03200SET.NG
Electrical angle measurer R10	03201.NG
Bending die R10	03202.L
Length limit stop	03203
Bending die with movable jaws (120 x 10 mm Cu)	03228
Stage bending tool with 2 pairs of pressure plates for 5 and 10 mm stages (max. range: 100 x 5 mm / 60 x 10 mm Cu)	03246



Prod.-No. 03201.NG



Prod.-No. 03202.L



Prod.-No. 03228

Electro-hydraulic pump AHP M1

Technical data:

Max. pressure:	700 bar
Max. flow rate:	1.1 l/min
Oil type:	HLP 46
Filling volume:	3.2 l
Working volume:	2.2 l
Weight:	29 kg
Operating voltage:	230 V / 50 Hz
Power:	1.3 kW
Current consumption:	5.7 A
Motor speed:	2,860 rpm



Prod.-No. 03857

	Prod.-No.
Electro-hydraulic pump AHP M1 incl. hydraulic hose 2.00 m	03857
Foot switch with safety function (accessories necessary for operation)	03862.NG



Prod.-No. 03862.NG Foot switch

ALFRA BS 120 CU-BUSBAR BENDING AND HOLE PUNCHING DEVICE

Bend, punch, ready, go!

With the Alfra BS 120 CU busbar bending and punching device in the set variant, enclosure builders can get started immediately, because the bending-die, electric angle reader, foot switch and hydraulic pump are included in the scope of delivery (punching tools are available as an option depending on the required dimensions).

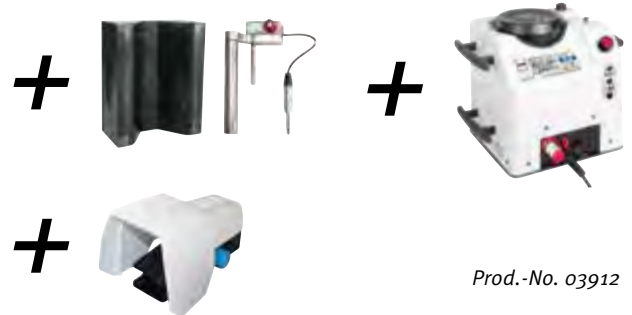
This means: Precise bending and punching is done by simple conversion in just a few steps. Even in the set version, you benefit from improvements to protect the machine.



ALFRA BS 120-Set

Prod.-No.
03912

- Prod.-No. 03200SET.NG
ALFRA BS 120 CU-busbar bending and hole punching device
- Prod.-No. 03857
Electro-hydraulic pump **AHP M1**
- Prod.-No. 03862.NG
Foot switch with safety function

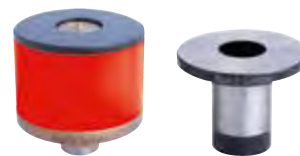


Prod.-No. 03912

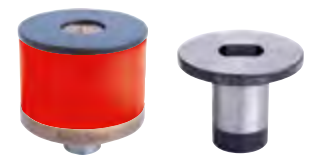
Accessories

Punches and dies

Punch Ø in mm	Metric Screw connection	Max. Material thickness in mm	Prod.-No.
6.6	6.0	5.0	03204
9.0	8.0	6.0	03205
9.5	8.0	6.0	03206
11.0	10.0	12.0	03207
11.5	10.0	12.0	03208
13.5	12.0	12.0	03209
14.0	12.0	12.0	03210
17.5	16.0	12.0	03211
18.0	16.0	12.0	03212
21.0	20.0	12.0	03213
21.5	20.0	12.0	03214



Round punches and dies



oblong hole punches and dies

Die Ø Max. in mm	Material thickness in mm	Prod.-No.
6.6	5.0	03230
9.0	6.0	03231
9.5	6.0	03232
11.0	12.0	03233
11.5	12.0	03234
13.5	12.0	03235
14.0	12.0	03236
17.5	12.0	03237
18.0	12.0	03238
21.0	12.0	03239
21.5	12.0	03240

Punches and dies for oblong holes up to max. L x W = 21 x 18 mm
upon request

Prod.-No.
03241