



SNÍMAČE TEPLOTY TC10-B

Série TC10-B

TC10B-14365198

Snímač teploty Typ K -40-1200°C 150x6mm G1/2"
NL=50mm

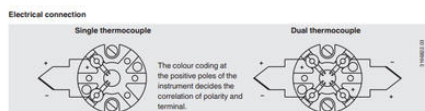


- Termočlánky K, J, E, N, T
- Teplota -40 až 1200°C
- Připojení M, NPT
- Média voda, plyny, oleje
- ATEX, IECEx, SIL2, DNV GL

POPIS PRODUKTU

SPECIFIKACE

Insertion length	150 mm
Material Sensor Body	Nerez ocel 316Ti
Materiál těla	Hliník
Neck length	0,05 m
Plug diameter	6 mm
Provozní teplota max.	1200 °C
Provozní teplota min.	-40 °C
Teplota okolí do	80 °C
Teplota okolí od	-40 °C
Třída krytí	IP65



Connection head

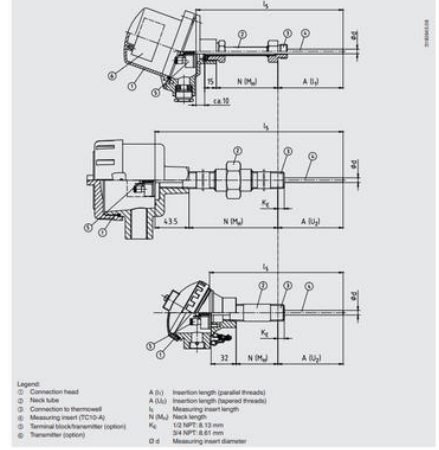
■ European designs per EN 50468 / DIN 43735



Model	Material	Cable entry thread size	Ingress protection (max. 3)	Cap	Surface	Connection to neck tube
BS	Aluminum	M20 x 1.5 or 1/2 NPT ¹⁾	IP65, IP68	Flat cap with 2 screws	Blak, lacquered ²⁾	M24 x 1.5, 1/2 NPT
BSZ	Aluminum	M20 x 1.5 or 1/2 NPT ¹⁾	IP65, IP68	Spherical hinged cover with cylinder head screw	Blak, lacquered ²⁾	M24 x 1.5, 1/2 NPT
BSZ-H	Aluminum	M20 x 1.5 or 1/2 NPT ¹⁾	IP65, IP68	Raised hinged cover with cylinder head screw	Blak, lacquered ²⁾	M24 x 1.5, 1/2 NPT
BSZ-H (ex cable outlet)	Aluminum	2 x M20 x 1.5 or 2 x 1/2 NPT ¹⁾	IP65, IP68	Raised hinged cover with cylinder head screw	Blak, lacquered ²⁾	M24 x 1.5
BSZ-H / DIN15 ³⁾	Aluminum	M20 x 1.5 or 1/2 NPT ¹⁾	IP65	Raised hinged cover with cylinder head screw	Blak, lacquered ²⁾	M24 x 1.5, 1/2 NPT
BSS	Aluminum	M20 x 1.5 or 1/2 NPT ¹⁾	IP65	Spherical hinged cover with clamping lever	Blak, lacquered ²⁾	M24 x 1.5, 1/2 NPT
BSS-H	Aluminum	M20 x 1.5 or 1/2 NPT ¹⁾	IP65	Raised hinged cover with clamping lever	Blak, lacquered ²⁾	M24 x 1.5, 1/2 NPT
BVS	Stainless steel	M20 x 1.5 3 ⁴⁾	IP65	Precision-cast screw on top	Blak, electroplated	M24 x 1.5
BSZ-K	Plastic	M20 x 1.5 or 1/2 NPT ¹⁾	IP65	Spherical hinged cover with cylinder head screw	Blak	M24 x 1.5
BSZ-HK	Plastic	M20 x 1.5 or 1/2 NPT ¹⁾	IP65	Raised hinged cover with cylinder head screw	Blak	M24 x 1.5

Model	Explosion protection				
	Without	Ex i (gas) Zone 0, 1, 2	Ex i (dust) Zone 20, 21, 22	Ex nA (gas) Zone 2	Ex tc (dust) Zone 22
BS	x	-	-	-	-
BSZ	x	x	x	x	x
BSZ-H	x	x	x	x	x
BSZ-H (ex cable outlet)	x	x	x	x	x
BSZ-H / DIN15 ³⁾	x	x	-	-	-
BSS	x	x	-	-	-
BSS-H	x	x	-	-	-
BVS	x	x	-	-	-
BSZ-K	x	x	-	-	-
BSZ-HK	x	x	-	-	-

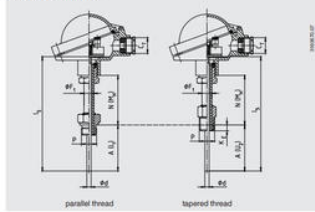
Fig. with parallel thread, for tapered thread see "Connection to thermowell"



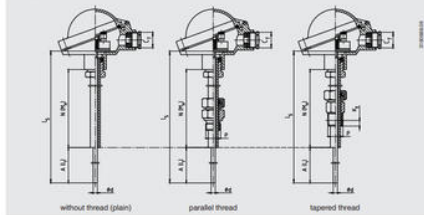
- Legend
- ① Connection head
 - ② Neck tube
 - ③ Connection to Thermowell
 - ④ Measuring insert (TC10-A)
 - ⑤ Terminal block/transmitter (option)
 - ⑥ Transmitter (option)
- A (p.) Insertion length (parallel threads)
 A (t) Insertion length (tapered threads)
 l Measuring insert length
 N (M) Neck length
 K₁ 1/2 NPT & 13 mm
 3/4 NPT 2.01 mm
 Ø d Measuring insert diameter

Neck tube design

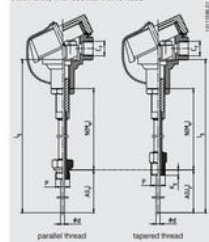
Neck tube per DIN 43772



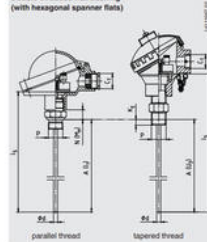
Neck tube per DIN 43772, straight, with/without compression fitting



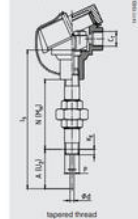
Neck tube, with counter nut to head



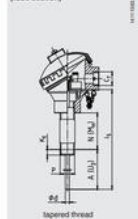
Double threaded hex bushing (with hexagonal spigot flats)



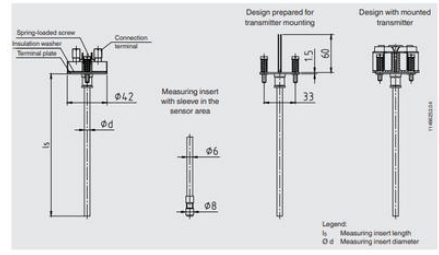
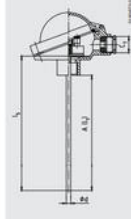
"Ripple-union-ripple" neck tube



Double threaded hex bushing (tube section)



Without neck tube



- Legend
- l₁ Measuring insert length
 - Ø d Measuring insert diameter