



TERMOČLÁNKY TC95

Série TC95

TC95
Termočlánek

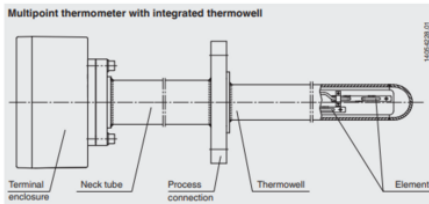
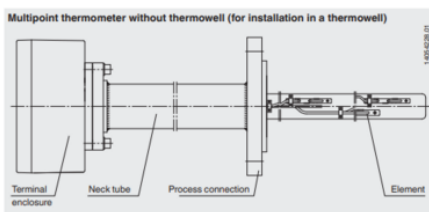
- Teplota -196°C až 600°C
- PT100
- Tělo nerez, speciální materiály
- ATEX, IECEx, GOST



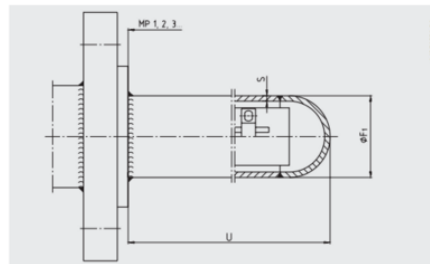
POPIS PRODUKTU

SPECIFIKACE

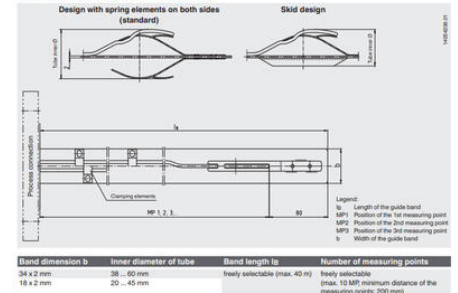
| | |
|---------------------------------|-----------------------------------|
| Materiál | Nerez ocel 316L, Nerez ocel 316Ti |
| Materiál kontaktní části | Slitina |
| Shoda s normami | NAMUR, Ex-ia |



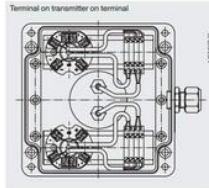
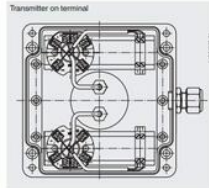
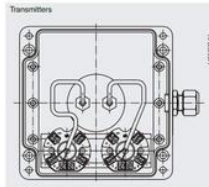
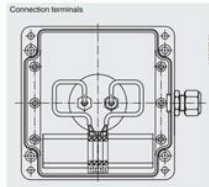
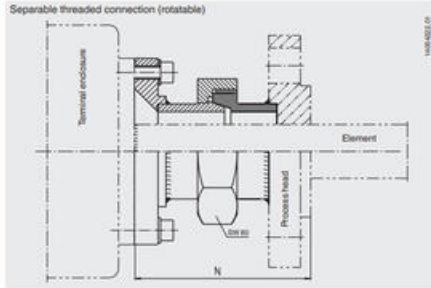
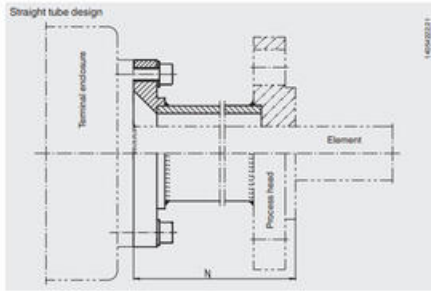
■ Thermowell (option)



■ Element (flat-steel band design with spring elements)



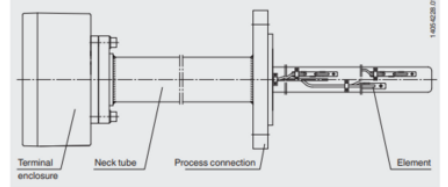
■ Neck tube



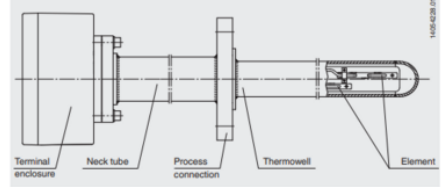
The actual wiring can deviate from the illustration in the data sheet.

| Connection options in the terminal enclosure | Terminal enclosure dimensions in mm | | |
|--|-------------------------------------|---------------|---------------|
| | ca. 160 x 160 | ca. 160 x 260 | ca. 250 x 400 |
| Connection terminals | up to 10 MP | up to 10 MP | up to 10 MP |
| Transmitters | up to 4 MP | up to 8 MP | up to 10 MP |
| Transmitter on terminal | up to 3 MP | up to 8 MP | up to 10 MP |
| Terminal on transmitter on terminal | up to 2 MP | up to 4 MP | up to 8 MP |

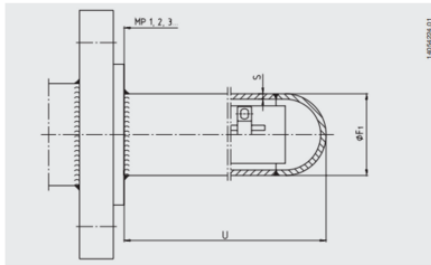
■ Multipoint thermometer without thermowell (for installation in a thermowell)



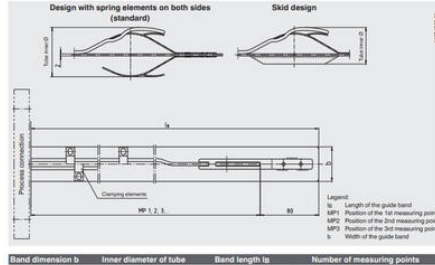
■ Multipoint thermometer with integrated thermowell



■ Thermowell (option)

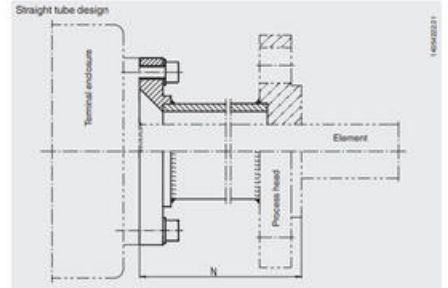


■ Element (flat steel band design with spring elements)

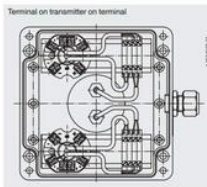
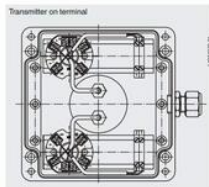
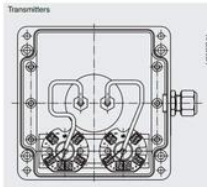
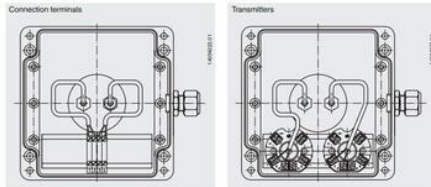
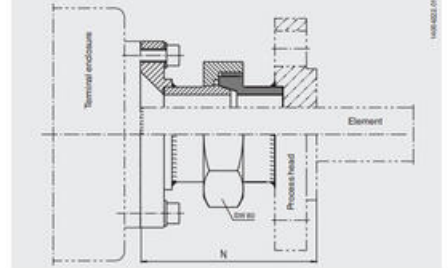


| Band dimension b | Inner diameter of tube | Band length lb | Number of measuring points |
|------------------|------------------------|-------------------------------|---|
| 34 x 2 mm | 38 - 80 mm | freely selectable (max. 40 m) | freely selectable |
| 18 x 2 mm | 20 - 45 mm | | (max. 10 MP minimum distance of the measuring points: 200 mm) |

■ Neck tube



■ Separable threaded connection (rotatable)



The actual wiring can deviate from the illustration in the data sheet.

| Connection options in the terminal enclosure | Terminal enclosure dimensions in mm | | |
|--|-------------------------------------|---------------|---------------|
| | ca. 160 x 160 | ca. 160 x 260 | ca. 250 x 400 |
| Connection terminals | up to 10 MP | up to 10 MP | up to 10 MP |
| Transmitters | up to 4 MP | up to 8 MP | up to 10 MP |
| Transmitter on terminal | up to 3 MP | up to 8 MP | up to 10 MP |
| Terminal on transmitter on terminal | up to 2 MP | up to 4 MP | up to 8 MP |