



TERMOMETRY 75

Série 75

M75

Termometr plynový

- Plynové
- Teplota 50°C až 700°C
- Ø100 mm
- Připojení G, NPT

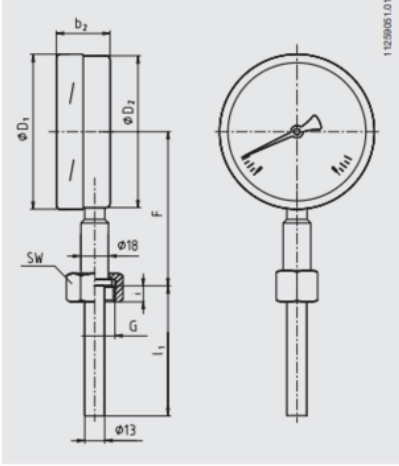


POPIS PRODUKTU

SPECIFIKACE

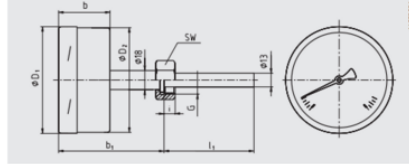
Materiál kontaktní části	Nerez ocel 316Ti
Materiál průhledu	Laminované bezpečnostní sklo
Materiál těla	Nezerová ocel 1,4301
Plnění	Ne
Plug diameter	13 mm
Provozní teplota max.	600 °C
Provozní teplota min.	150 °C
Průměr	100 mm
Teplota okolí do	60 °C
Teplota okolí od	0 °C
Tlaková odolnost	25 bar
Třída krytí	IP66

Model R75.100, lower mount (LM)



11239051.01

Model A75.100, back mount (BM)



11239051.01

Design 2, male nut

Standard insertion length $l_1 = 120, 140, 180, 230$ mm

Nominal size	Process connection	Dimensions in mm		
NS	G	I	SW	ϕd
100	G 1/2 B	22	32	13

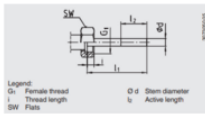


Legend:
 G Male thread
 I Thread length incl. collar
 SW Flats
 ϕd Stem diameter
 l_4 Active length

Design 3, union nut

Standard insertion length $l_1 = 89, 126, 186, 226, 276$ mm

Nominal size	Process connection	Dimensions in mm		
NS	G	I	SW	ϕd
100	G 1/2 B	10.5	32	13



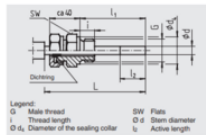
Legend:
 G Female thread
 I Thread length
 SW Flats
 ϕd Stem diameter
 l_4 Active length

Design 4, compression fitting (sliding on stem)

Insertion length $l_1 =$ variable

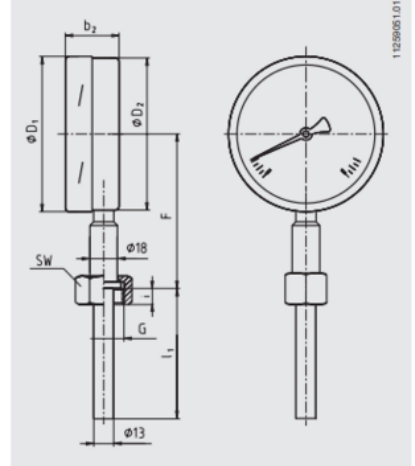
Length $L = l_1 + 40$ mm

Nominal size	Process connection	Dimensions in mm		
NS	G	I	SW	ϕd
100	G 1/2 B	16	32	13
	1/2 NPT	20	30	-



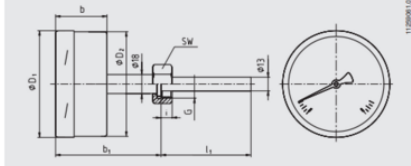
Legend:
 G Male thread
 I Thread length
 ϕd Diameter of the sealing collar
 SW Flats
 ϕd Stem diameter
 l_4 Active length

Model R75.100, lower mount (LM)



11239051.01

Model A75.100, back mount (BM)

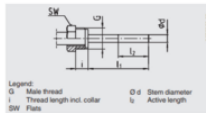


11239051.01

Design 2, male nut

Standard insertion length $l_1 = 120, 140, 180, 230$ mm

Nominal size	Process connection	Dimensions in mm		
NS	G	I	SW	ϕd
100	G 1/2 B	22	32	13

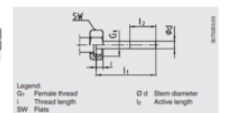


Legend:
 G Male thread
 I Thread length incl. collar
 SW Flats
 ϕd Stem diameter
 l_4 Active length

Design 3, union nut

Standard insertion length $l_1 = 89, 126, 186, 226, 276$ mm

Nominal size	Process connection	Dimensions in mm		
NS	G	I	SW	ϕd
100	G 1/2 B	10.5	32	13



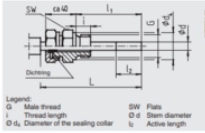
Legend:
 G Female thread
 I Thread length
 SW Flats
 ϕd Stem diameter
 l_4 Active length

Design 4, compression fitting (sliding on stem)

Insertion length $l_1 =$ variable

Length $L = l_1 + 40$ mm

Nominal size	Process connection	Dimensions in mm		
NS	G	I	SW	ϕd
100	G 1/2 B	16	32	13
	1/2 NPT	20	30	-



Legend:
 G Male thread
 I Thread length
 ϕd Diameter of the sealing collar
 SW Flats
 ϕd Stem diameter
 l_4 Active length