



SNÍMAČE TEPLOTY TR34

Série TR34

TR34-14115539

Snímač teploty M12x1 -30-150°C PT100 G1/4 50x6mm
ATEX



- Výstup 4-20mA
- Teplota -30 až 250°C
- Připojení G, NPT
- Média voda, plyny, oleje
- ATEX, IECEx

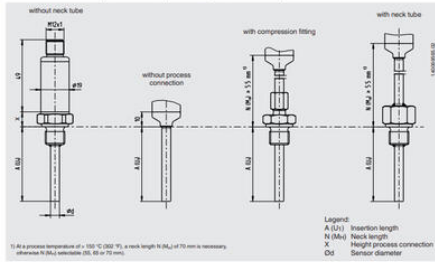
POPIS PRODUKTU

SPECIFIKACE

Insertion length	50 mm
Materiál kontaktní části	Nerez ocel
Materiál těla	Nerez ocel
Napájecí napětí DC max.	30 V DC
Napájecí napětí DC min.	10 V DC
Plug diameter	6 mm
Připojení	G1/4
Provozní teplota max.	150 °C
Provozní teplota min.	-30 °C
Shoda s normami	ATEX
Teplota okolí do	85 °C
Teplota okolí od	-40 °C
Třída krytí	IP67

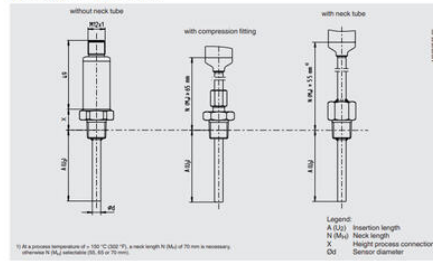
Dimensions in mm

Process connection with parallel threads (or without process connection)



Thread	Height process connection X
G 1/2	11
G 3/4	11
G 1	10
M12	11
M20	11

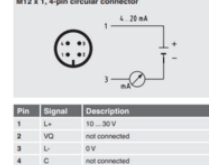
Process connection with tapered thread



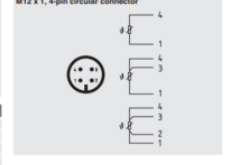
Thread	Height process connection X
1/2 NPT	15
3/4 NPT	19

Electrical connection

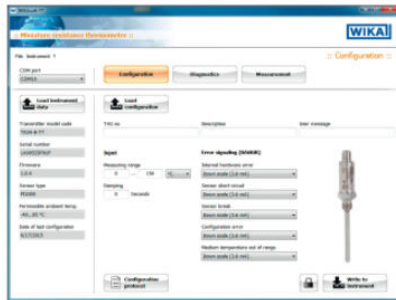
Output signal 4 ... 20 mA



Output signal Pt100 or Pt1000 sensor

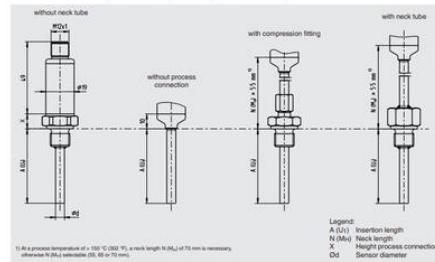


Configuration software WIKAsoft-TT



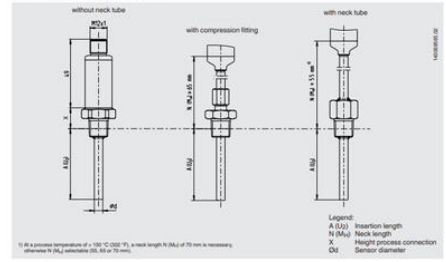
Dimensions in mm

Process connection with parallel threads (or without process connection)



Thread	Height process connection X
G 1/2	11
G 3/4	11
G 1	10
M12	11
M20	11

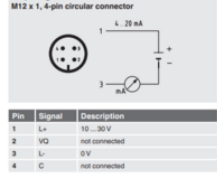
Process connection with tapered thread



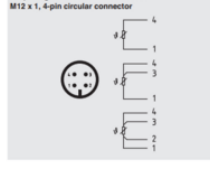
Thread	Height process connection X
1/2 NPT	15
3/4 NPT	19

Electrical connection

Output signal 4 ... 20 mA



Output signal Pt100 or Pt1000 sensor



Configuration software WIKAsoft-TT

