



SPOJKA BANJO PRO ŠROUB, JEDNODUCHÁ

Série 50000

50500 3-M5
Spojka Banjo 3mm - ØM5

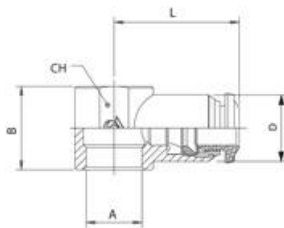
- Teplota -20°C až 80°C
- Tlak max. 20 bar
- Tělo z poniklované mosazi
- Nitrilové těsnění



POPIS PRODUKTU

SPECIFIKACE

Balení	10 ks
Materiál těla	Poniklovaná mosaz
Tvar těla	B



Red	Black	A	B	L	CH	D
50500 3-M5	50500N 3-M5	M5	12,5	19,0	-	50,0
50500 3-M6	50500N 3-M6	M6	12,5	19,0	-	50,0
50500 4-M5	50500N 4-M5	M5	12,5	19,0	-	50,0
50500 4-M6	50500N 4-M6	M6	12,5	19,0	-	50,0
50500 4-1/8	50500N 4-1/8	1/8	15,0	21,0	14	50,0
50500 6-M5	50500N 6-M5	M5	12,5	20,5	-	52,5
50500 6-M6	50500N 6-M6	M6	12,5	20,5	-	52,5
50500 6-1/8	50500N 6-1/8	1/8	15,0	22,0	14	52,5
50500 6-1/4	50500N 6-1/4	1/4	16,0	25,0	18	52,5
50500 8-1/8	50500N 8-1/8	1/8	15,0	24,0	14	54,0
50500 8-1/4	50500N 8-1/4	1/4	16,0	26,0	18	54,0
50500 8-3/8	50500N 8-3/8	3/8	20,0	32,0	21	54,0
50500 10-1/4	50500N 10-1/4	1/4	20,0	29,0	18	57,0
50500 10-3/8	50500N 10-3/8	3/8	20,0	30,5	21	57,0
50500 12-3/8	50500N 12-3/8	3/8	20,0	32,5	21	57,5
50500 12-1/2	50500N 12-1/2	1/2	24,0	38,0	25	57,5
50500 14-1/2	50500N 14-1/2	1/2	24,0	35,5	25	57,5